

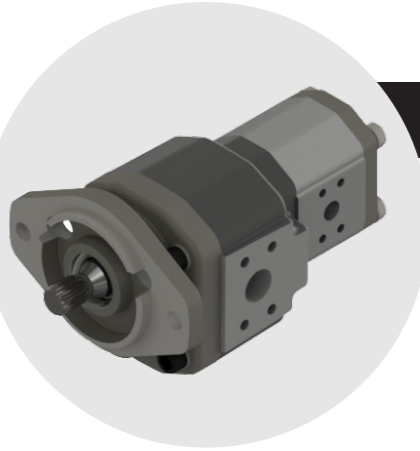
# Telehandler



**Roquet Hydraulics, S.L.**  
Antoni Figueras, 91, bloc B  
08551 Tona | Barcelona | Spain  
Phone: +34 938 124 664  
info@roquetgroup.com  
[www.roquetgroup.com](http://www.roquetgroup.com)

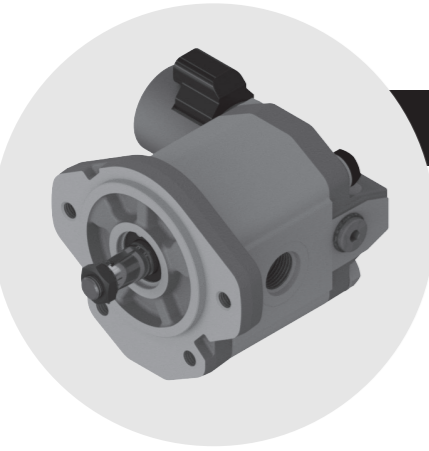
**Roquet**  
*making moves*





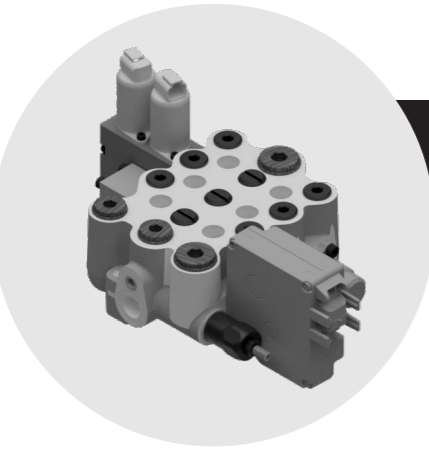
## Main Pump

- Cast Iron Pump.
- Compact and resistant.
- Hydrostatically balanced.
- Multiple displacements, port connections, fixing flanges and driving shafts available.



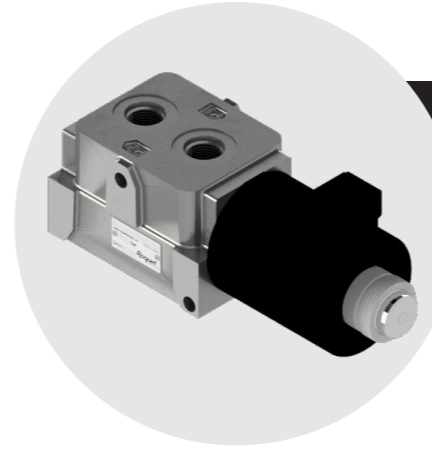
## Fan Motor

- Group 3 Aluminium motor with pressure proportional relief valve.
- Displacements, front flanges, drive shafts and ports most common available.
- Voltage range – 12V DC / 24V DC.
- Connectors Deutsch DT04-2P and DIN 43650 / ISO 4400.



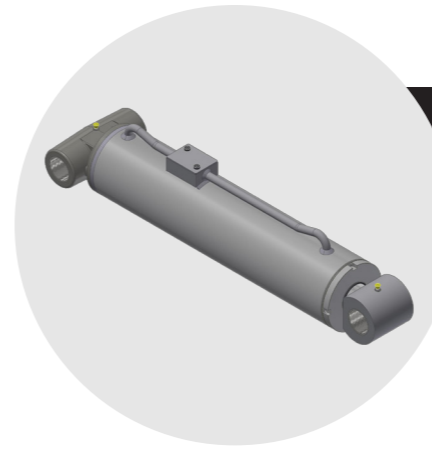
## Main Control Valve

- Open center with low pressure drop, rated 80l. / min.
- Specific spool metering.
- Max. Pressure: 350bar.
- Mechanical, pneumatic, hydraulic, electrohydraulic proportional and electromecanic actuator.



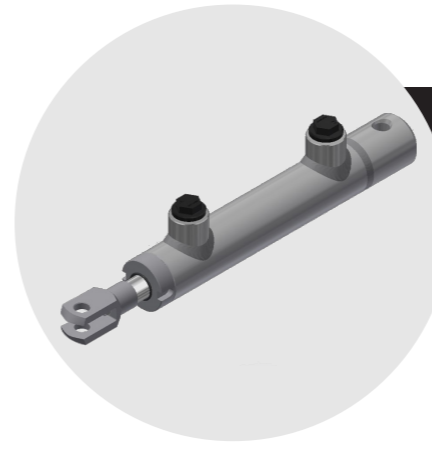
## Diverter valves

- High-strength cast-iron bodies.
- Casehardened close tolerance spools for long life and low leakage.
- Good combined flow/pressure performance.



## Cylinders

- Product optimized to meet your needs.
- High rod corrosion resistance: NSS or CASS rating.
- Best-in-class Painting Process & Nano-Ceramic preparation process.
- Main welding 100% robotized.
- Tube Internal Diameter Finished (Honning & SRB) after welding.
- Best-in-class highly automated manufacturing.
- Main welding 100% robotized. Rod friction welding available.



## Coupler Cylinders

- Product optimized to meet your needs.
- Special body design on demand.
- Nodular and laminar casting.
- Low friction Premium sealing system.
- Rod diameter: from 16 to 45mm.
- Tub internal diameter: from 35 to 80mm.
- Tube internal diameter finished after welding.
- High rod corrosion resistance: NSS or CASS rating.
- Best-in-class highly automated manufacturing, automated assembly and test and painting processes.

