

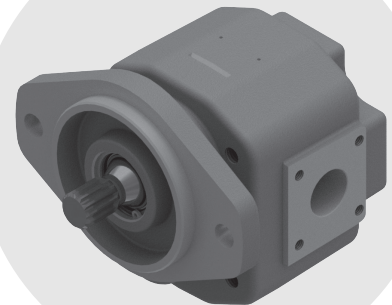
Skid Steer Loader Compact Track Loader



Roquet Hydraulics, S.L.
Antoni Figueras, 91, bloc B
08551 Tona | Barcelona | Spain
Phone: +34 938 124 664
info@roquetgroup.com
www.roquetgroup.com

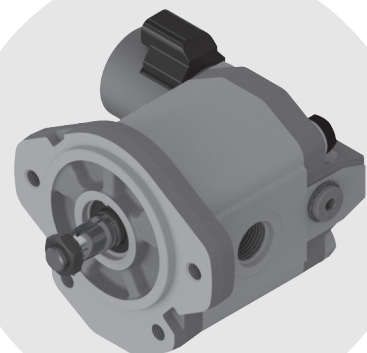
Roquet
making moves





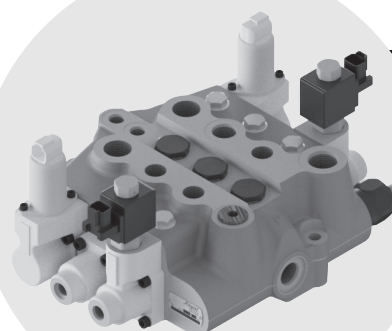
Main pump

- Group 3 Cast Iron Pump.
- Compact and resistant.
- Hydrostatically balanced.
- Multiple displacements, port connections, fixing flanges and driving shafts available.



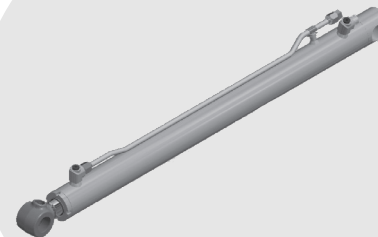
Fan Motor

- Group 2 Aluminium motor with pressure proportional relief valve.
- Displacements, front flanges, drive shafts and ports most common available.
- Voltage range – 12V DC / 24V DC.
- Connectors Deutsch DT04-2P and DIN 43650 / ISO 4400.



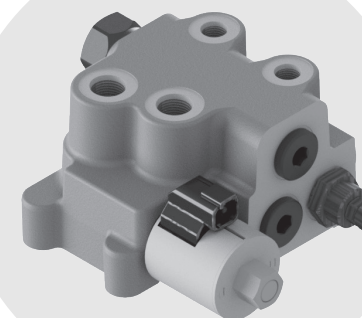
Main Control Valve

- Flow rate: 100l/min (26,4gpm).
- Max. Pressure: 350bar (5080psi).
- Mechanical, hydraulic and electrohydraulic proportional operators.
- Electrical spool blocking system for manual actuator.
- Customized spool metering.
- Self-leveling valve on top of the control valve available.



SSL & CTL Cylinders

- Product optimized to meet your needs.
- High rod corrosion resistance: NSS or CASS rating.
- Best-in-class highly automated manufacturing and Painting Process & Nano-Ceramic preparation process.
- Main welding 100% robotized.
- Tube Internal Diameter Finished (Honning & SRB) after welding.
- Rod diameter: from 20 to 60mm.
- Tub internal diameter: from 40 to 110mm.
- Rod friction welding. Wide range of rod materials: C45, 38MnVS6,...
- Forging components, wide range of bearing types.
- Cushioned options both ends.



Self-leveling valve

- Flow rate: 100l/min (26,4gpm).
- Pressure: 350bar (5080psi).
- 2 valves with single and double levelling function
- Easy adjustment.
- Single and double configuration available.
- Electrical ON/OFF leveling control.
- Self-leveling valve on top of the control valve available.

